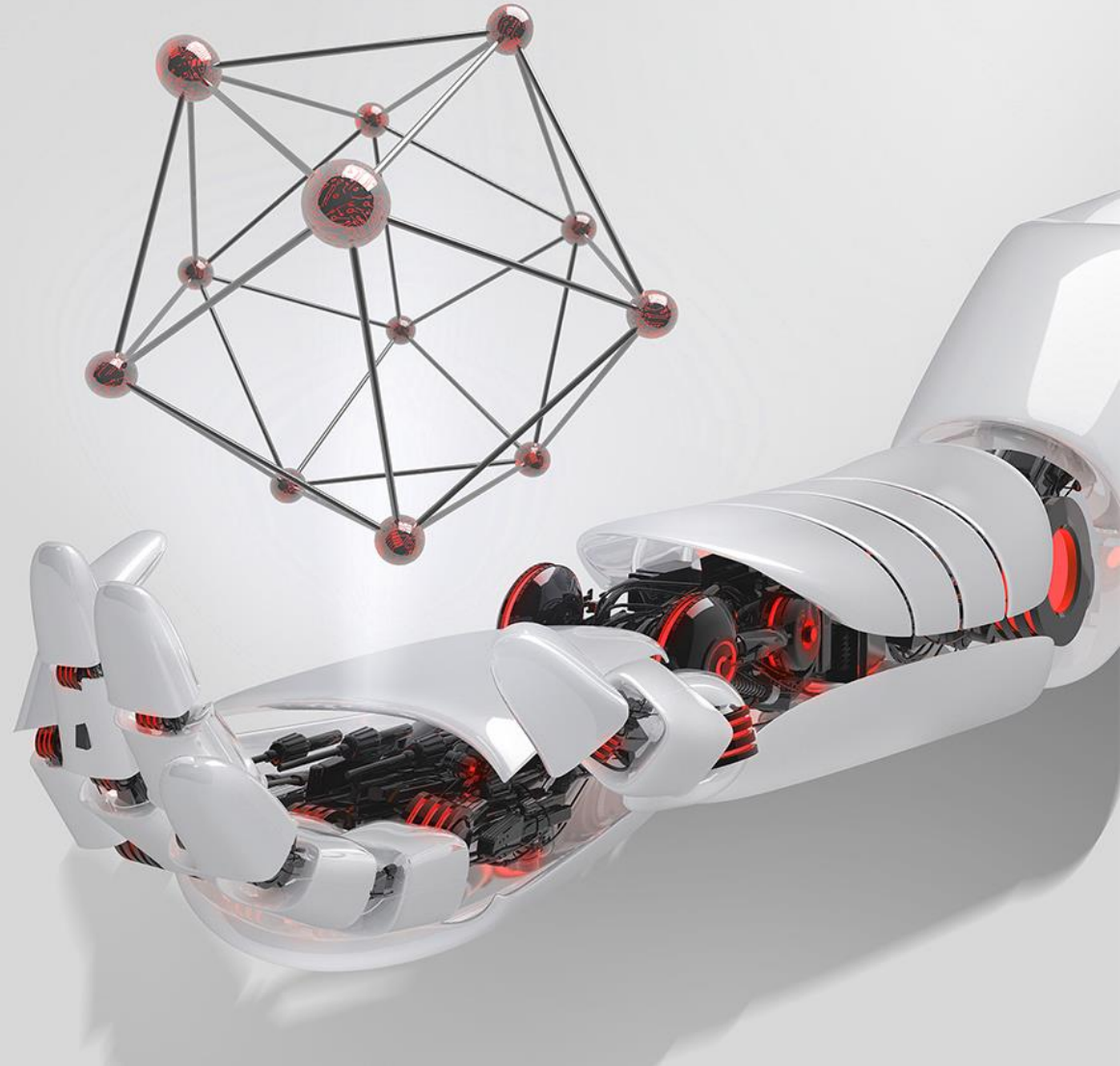


FusionSolar Partner Branding Guideline



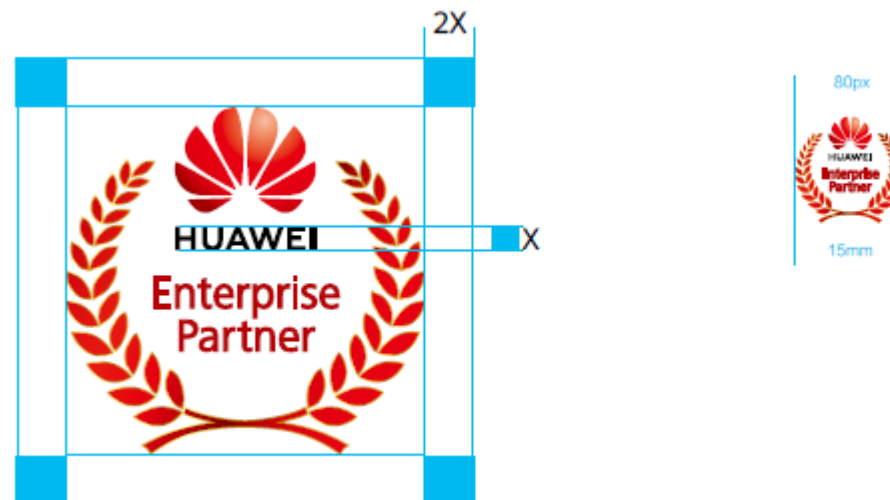
Smart PV 4ALL



Huawei Partner Logo

Huawei Partner Logo is composed of Oliver symbolizing cooperation, victory and hope with a crystalline and metal style.

This is the basic form of the Logo.



By changing the color of Oliver and the words, it can distinguish the different category and level of the partners.

- Distributor
- VAP
- Gold
- Silver
- Authorized



Co-branding

The recognized partners can use the Huawei Partner logo at co-branding occasions.

1. Vertical version is the priority
2. Height of two Logos should be the same.
3. The position of logo is preferably at the right bottom of the page.

In addition, if Huawei partner wants to use "Huawei Logo"   HUAWEI

they should submit a formal application and get authorized separately.



Position of Logo

Occasions: printed/digital advertisements, website, exhibition, printed document or collaterals.

Bottom right: printed datasheet/catalogues/advertisements;

Top left: website, online advertisement, social banner, EDM;

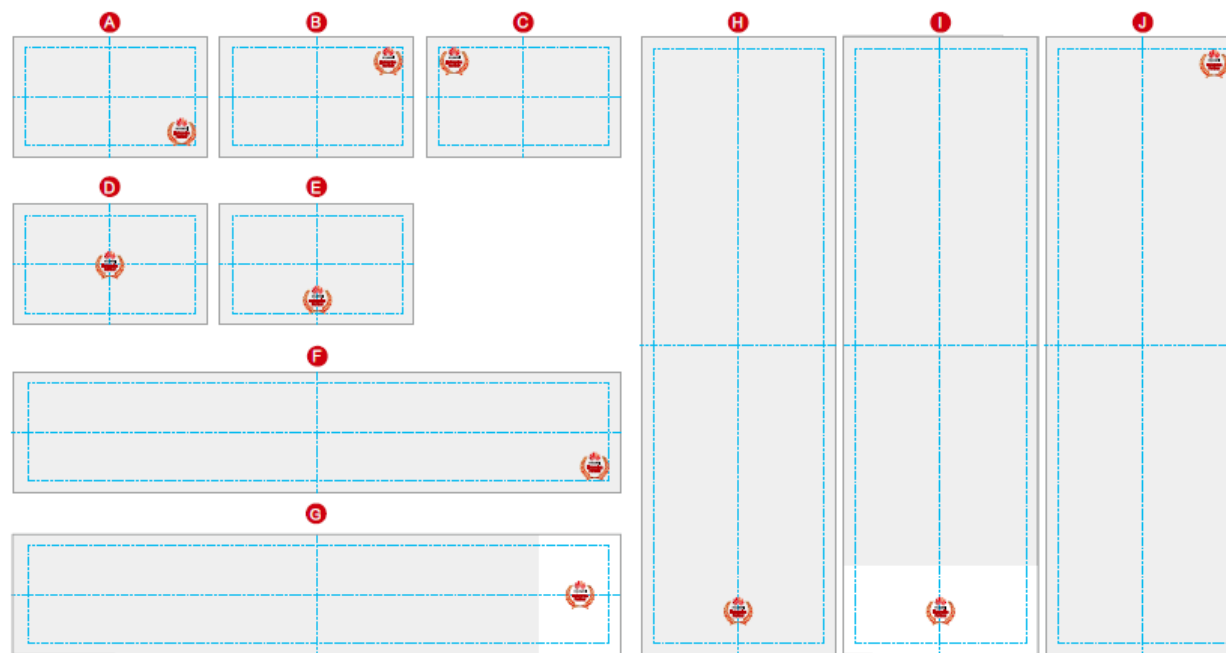
Center: Backdrop of co-branding event;

Bottom centered: PPT;

Right side (centered): Horizontal long ads;

Bottom centered: Vertical long ads;

Top right: flags, Roll-ups.



Thank you.

把数字世界带入每个人、每个家庭、
每个组织，构建万物互联的智能世界。

Bring digital to every person, home, and
organization for a fully connected,
intelligent world.

**Copyright©2018 Huawei Technologies Co., Ltd.
All Rights Reserved.**

The information in this document may contain predictive statements including, without limitation, statements regarding the future financial and operating results, future product portfolio, new technology, etc. There are a number of factors that could cause actual results and developments to differ materially from those expressed or implied in the predictive statements. Therefore, such information is provided for reference purpose only and constitutes neither an offer nor an acceptance. Huawei may change the information at any time without notice.

